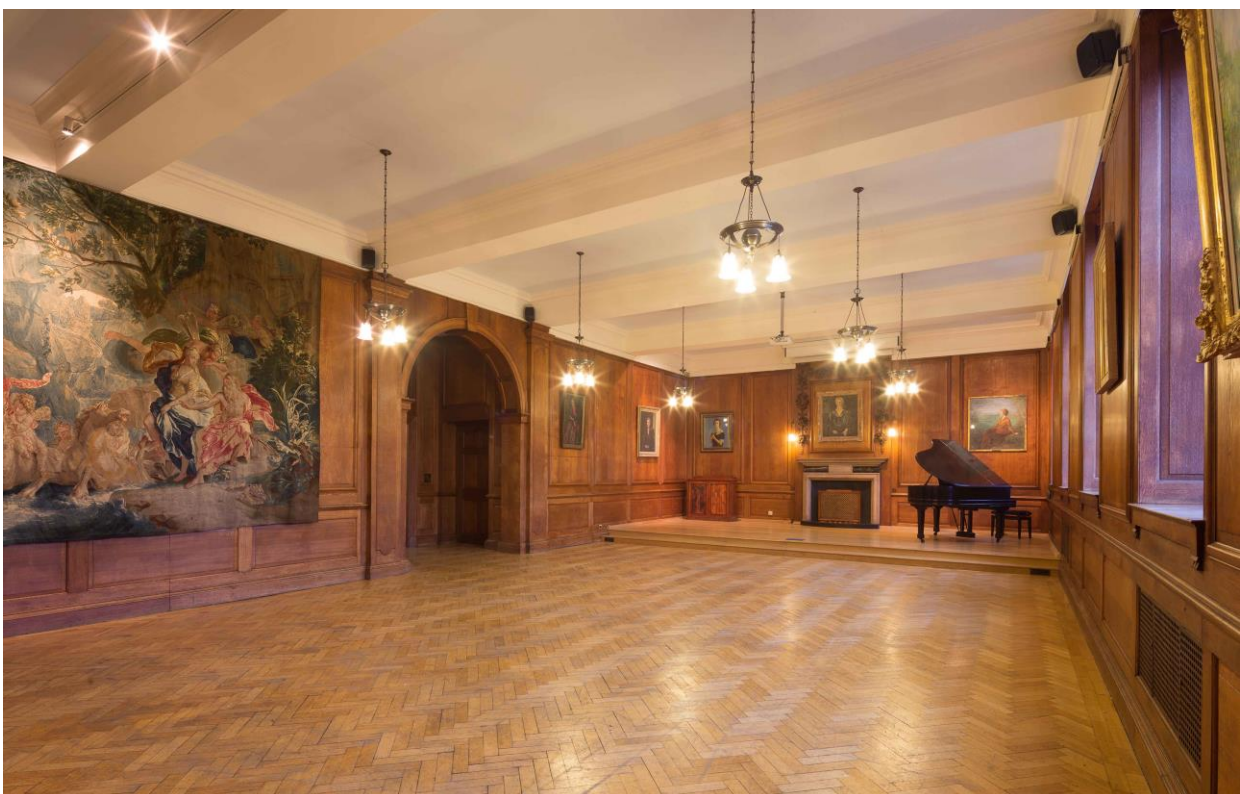
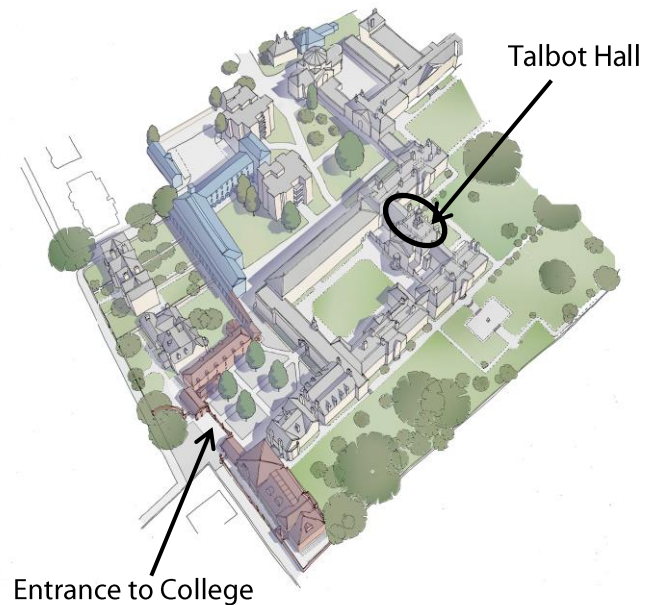


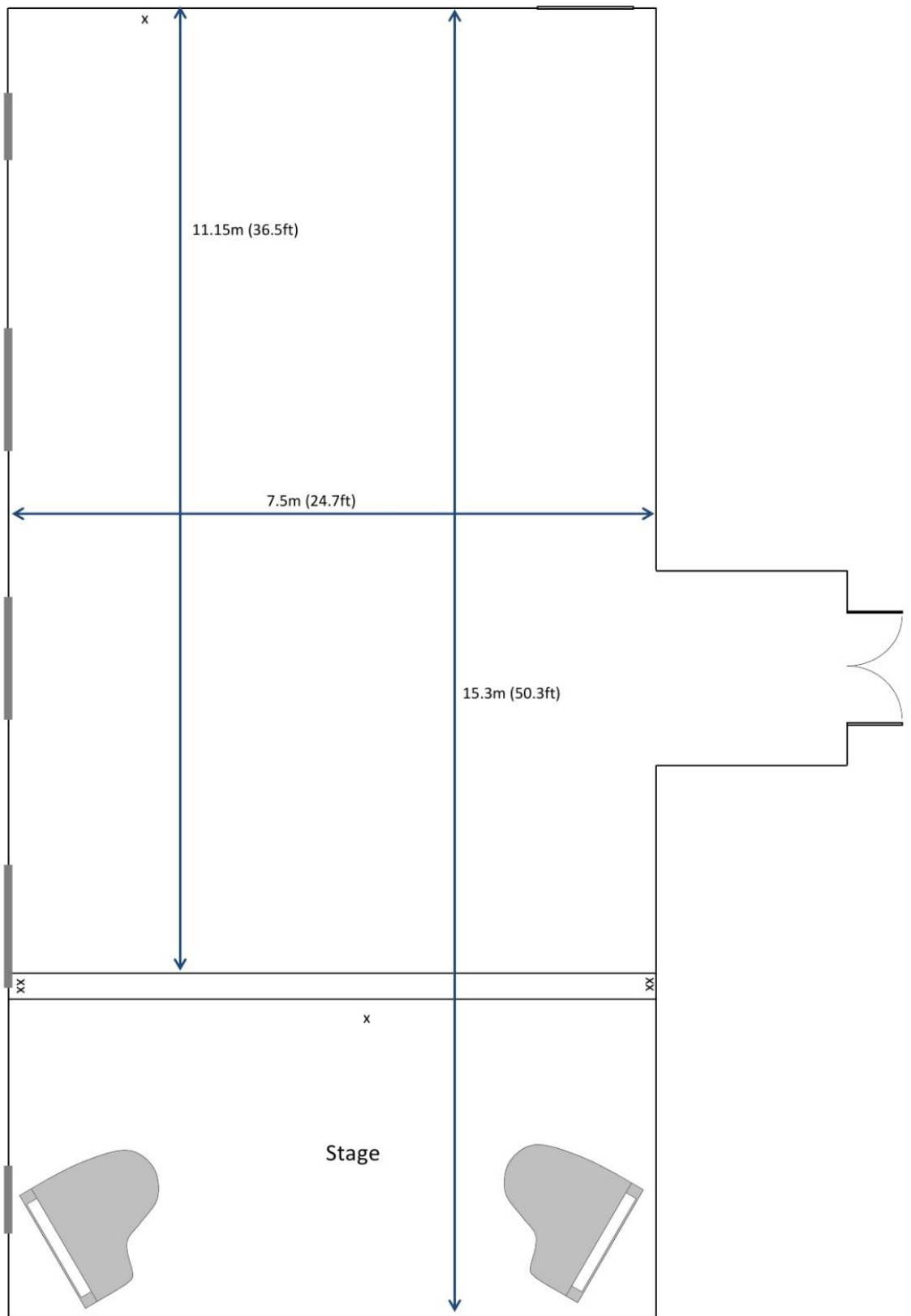
Talbot Hall

Directly opposite the main entrance into College, is the impressive Talbot Building - the columned portico of which opens onto the reception area in front of Talbot Hall. Built as the College dining hall in 1910, Talbot Hall is a large wood-panelled room and a truly grand space. It makes an impressive back drop for any function or meeting. Long windows line one wall, and the room is hung with portraits of College Fellows and alumni. Meeting refreshments can be provided inside Talbot Hall or just outside in the reception area, known as the Bear Pit. Talbot Hall's proximity to several nearby meeting rooms means it works well for seminars and workshops.

Key Information	
Size:	11.15m x 7.5m (excludes stage area)
Capacity:	Reception 150 Theatre 110 Cabaret 56 Boardroom 36
Facilities:	Ceiling mounted data projector, wall mounted projector screen, PA system. Handheld and lapel mikes. Lectern. Capacity for 10 exhibition boards.
Features:	Elegant reception area for registration and refreshments. Direct access to the quad during breaks. Two adjacent breakout rooms for larger conferences.



Talbot Hall



- Key:
- x Power socket, and number
 - Windows
 - ┌ Doorway